

# Annex 1

Locating Shahid Boroujerdi Site, using  
Iranian Documents and Google Earth  
Imagery

**Google Earth Satellite Image Showing  
Location of Shahid Boroujerdi relative  
to Parchin High Explosive Test  
Chamber Site  
Dated September 26 2018  
(Location: Parchin, Iran)**

**Parchin High  
Explosives  
Test Chamber  
Site**

**Shahid  
Boroujerdi  
Underground  
Facility  
(AKA Parchin  
Tunnel Site)**

Neyak

Hamamak

k-e-Enqelab

© 2018 Google  
Image © 2018 DigitalGlobe

Google Earth

26 SEP 2018

**Google Earth Satellite Imagery from December 2002  
(Location: Parchin, Iran)**



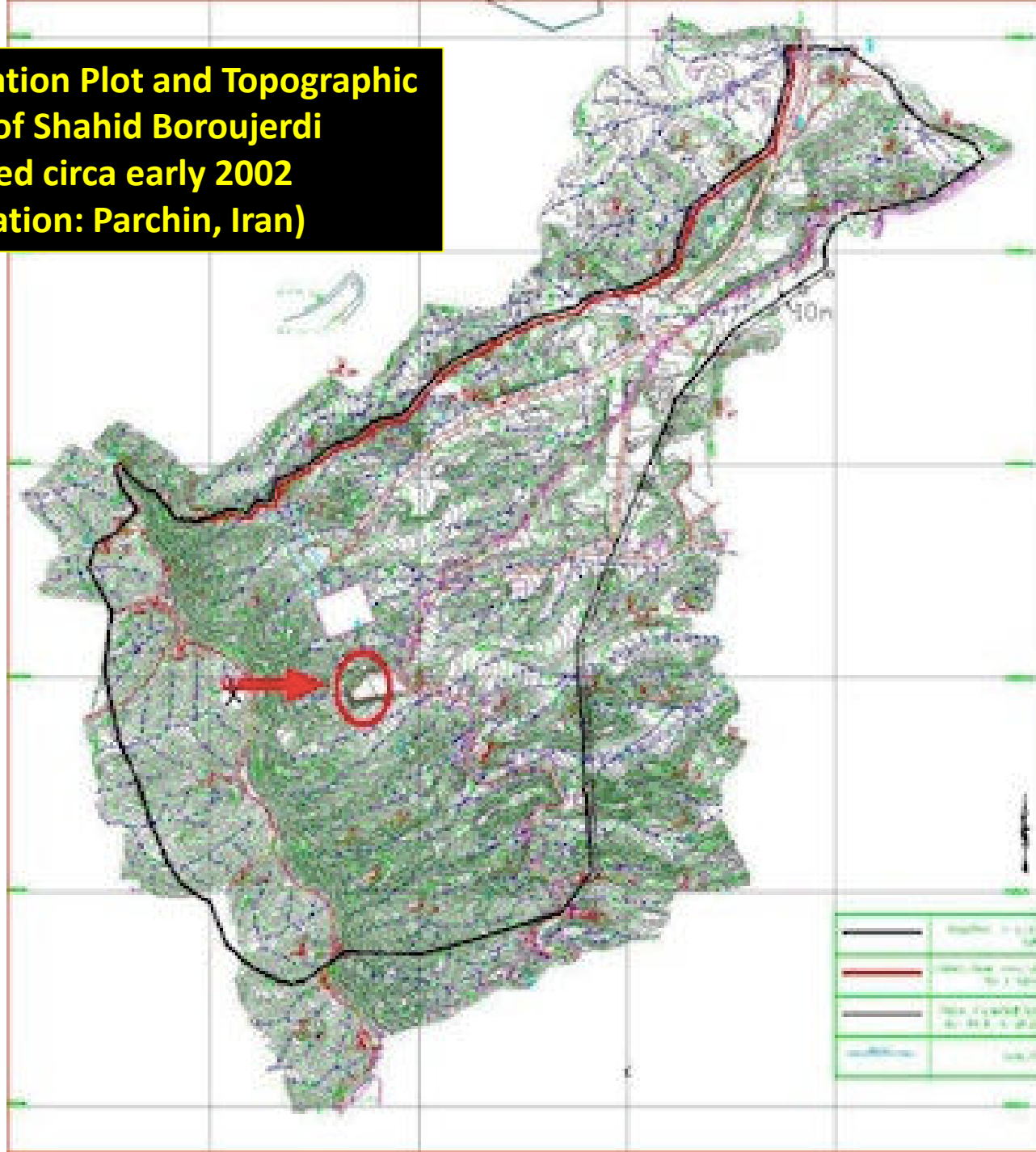
December 2002

**Iranian Location Overhead Image of Shahid Boroujerdi Circa 2002  
Overlain on Google Earth with Satellite Imagery from December 2002  
(Location: Parchin, Iran)**

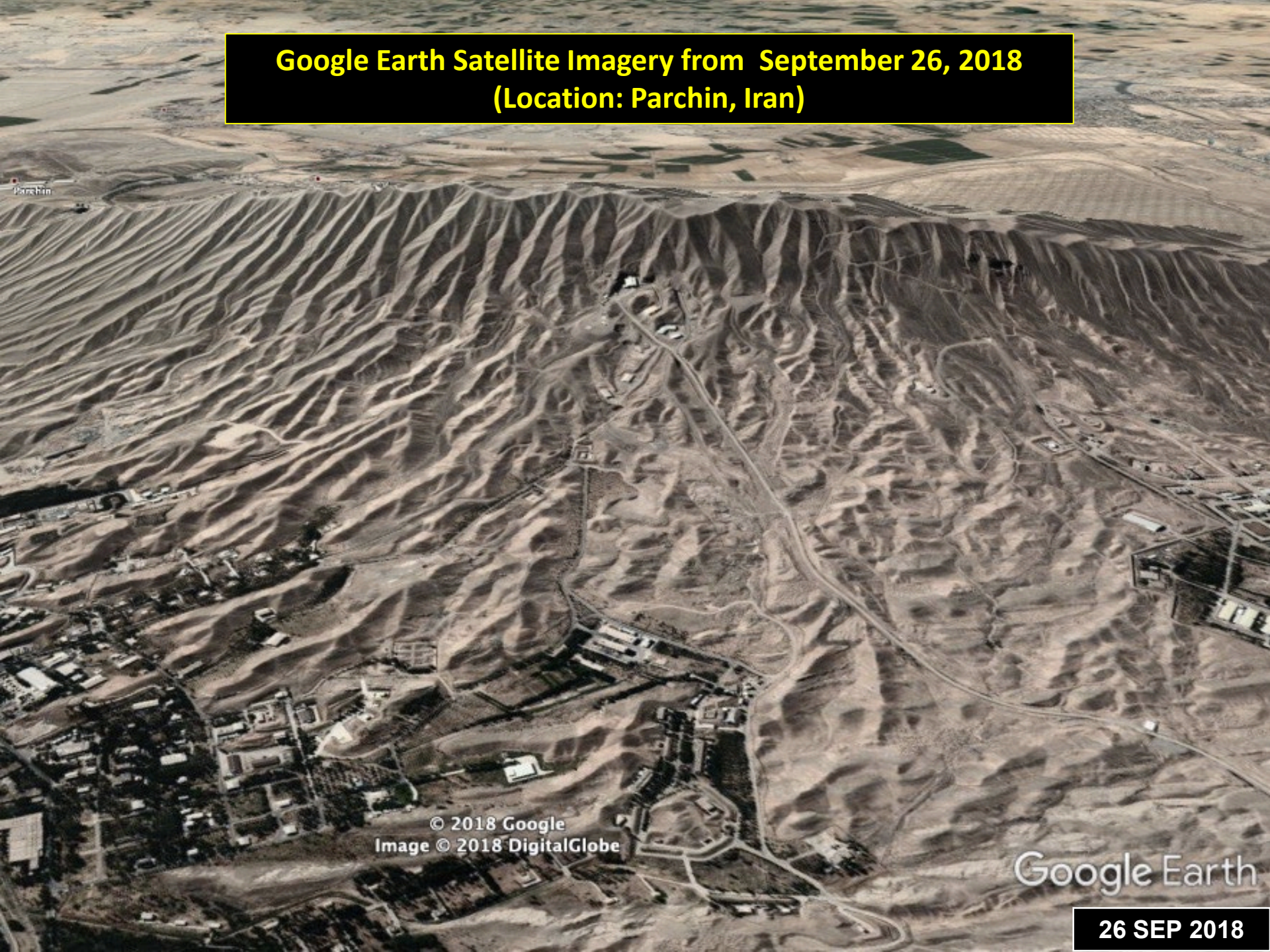


**December 2002**

**Iranian Location Plot and Topographic  
Map of Shahid Boroujerdi  
Dated circa early 2002  
(Location: Parchin, Iran)**



**Google Earth Satellite Imagery from September 26, 2018  
(Location: Parchin, Iran)**



© 2018 Google  
Image © 2018 DigitalGlobe

Google Earth

26 SEP 2018

**Iranian Location Plot and Topographic Map of Shahid Boroujerdi Dated circa early 2002  
Overlain on Google Earth with Satellite Imagery from September 26, 2018  
(Location: Parchin, Iran)**



© 2018 Google  
Image © 2018 DigitalGlobe

Google Earth

26 SEP 2018

**Iranian Location Plot and Topographic Map of Shahid Boroujerdi Dated circa early 2002  
Overlain on Google Earth with Satellite Imagery from September 26, 2018  
(Location: Parchin, Iran)**



© 2018 Google  
Image © 2018 DigitalGlobe

Google Earth

26 SEP 2018



**Google Earth Satellite Imagery from July 28, 2002  
(Location: Parchin, Iran)**



Image Landsat / Copernicus  
Image © 2018 DigitalGlobe  
Image NASA

Google Earth

28 JULY 2002

**Iranian Location Plot and Topographic Map of Shahid Boroujerdi Dated circa early 2002  
Overlain on Google Earth with Satellite Imagery from July 28, 2002  
(Location: Parchin, Iran)**



Image Landsat / Copernicus  
Image © 2018 DigitalGlobe  
Image NASA

Google Earth

28 JULY 2002

**Iranian Location Plot and Topographic Map of Shahid Boroujerdi Dated circa early 2002  
Overlain on Google Earth with Satellite Imagery from July 28, 2002  
(Location: Parchin, Iran)**



Image Landsat / Copernicus  
Image © 2018 DigitalGlobe  
Image NASA

Google Earth

28 JULY 2002